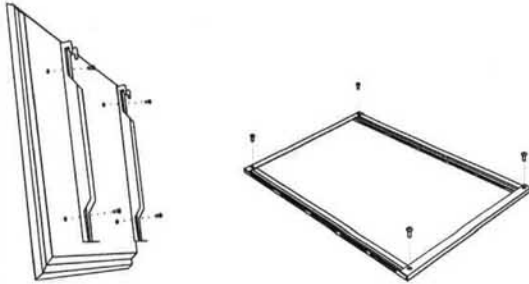


MUST BE FITTED BY A PROFESSIONAL

## LCD/PLASMA BRACKET F3 INSTALLATION GUIDE

### S.1

### Mount the arms & assemble the wall plate

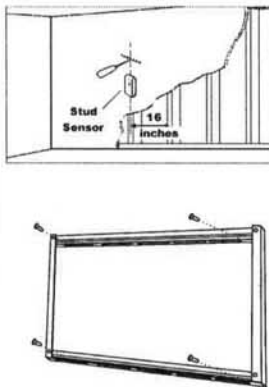


Thread the bolt through the appropriate washer, the arm and finally into the TV. Make sure the arms are vertically centered and level with each other.

Follow the right diagram to assemble the brackets to a wall plate. Insert the M8\*12 bolts to the threaded holes and tighten them to rivet the brackets.

### S.2

### Mount the wall plate



#### Wood Stud Mounting:

The wall plate must be mounted to two wood studs at least 12" apart. Use a high quality sensor to locate two adjacent studs. It is a good idea to verify where the studs are located with an awl or thin nail shown in diagram left. Pre-drill a 2.5" deep hole at the desired height in each stud using a 3/16" drill bit. Make sure these holes are in the center area of the studs and level with each other. Use the wall plate as a template to mark the location of the second hole in each stud. Drill 2.5" deep holes using the 3/16" drill in the marked location. Attach the wall plate to the wall using the four lag bolts. Make sure the wall plate is oriented so the flat surface in the center of the plate is against the wall and that a set of lag bolts is on each side of the plate.

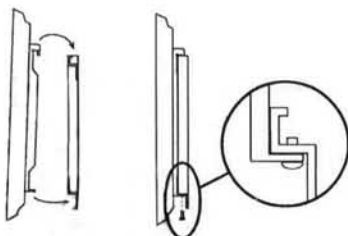
#### Brick, Solid Concrete and Concrete Block Mounting:

Use the wall plate as a template to mark 4 holes locations on the wall. The outer holes must fall to left and right of the center of the plate. Two in the top row of slots and two more in the bottom row. Make sure these holes are level and there is at least 6" between any two holes. Pre-drill these holes with a 1/2" masonry bit to at least 2.5" in depth. Insert a concrete anchor into each of these holes. Make sure the anchor is seated completely flush with the concrete surface even if there is a layer of drywall or other material in front. Attach the wall plate to the wall using 4 lag bolts.

**Warning: DO NOT OVERTIGHTEN THE LAG BOLTS! Tighten lag bolts only until the lag bolt is pulled firmly against the wall plate.**

### S.3

### Hang the TV onto the wall plate



First hook the arms over the top of the wall plate. Insert the safety bolts into the threaded holes in the bottom of the arms. Tighten them with the allen key so that they sit behind the bottom tab on the wall plate as shown in the detailed view of the right diagram.

\* Above guide is for guidance and must be fitted by a suitable professional engineer for safety reasons.